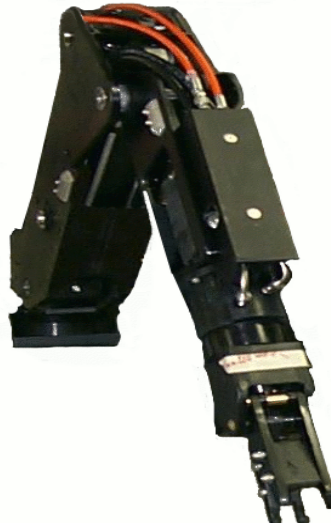


Magnum-5 STD

A rugged 5-function subsea manipulator

ds-m5std-v2



The *Magnum-5 Standard*, from the magnum family, is a rugged 5-function manipulator used primarily in ROV applications. This manipulator is designed to be reliable while operating in harsh environments. Components and assembly make this arm completely field serviceable.

The small stow envelope makes the Magnum-5 ideal for cage deployed vehicles. Typical installations have a Magnum-5 port side and a Magnum-7 starboard side. However, the Magnum-5 is available in both port and starboard configurations.

This arm is ideal for jetting and brushing operations, debris clearance, valve turning and bolt torquing, cable cutting, cable repair, biological and geological sampling, archeological work, transponder and probe installation, salvage and recovery.

Principal Characteristics

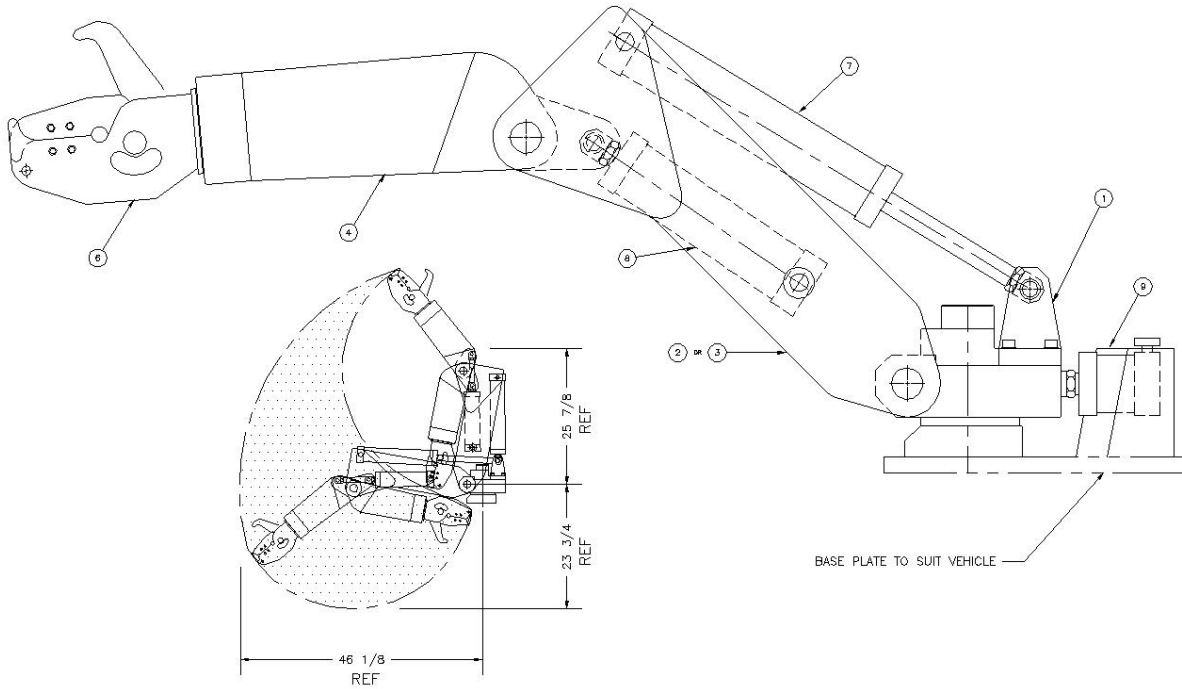
Reach:	46 inches
Weight:	57 Kg (125 lbs)
Maximum Lift:	454 Kg (1000 lbs)
Lift at Full Extension:	295 Kg (650 lbs)
Wrist Torque:	108 Nm (80 ft-lbs)
Grip Force:	160 Kg (350 lbs)
Operating Depth:	5000 msw (16,400 fsw)
Hydraulic Fluid:	Shell Tellus (or equivalent)
Input Pressure:	6900 kPa (1000 psi)
Input Flow:	19 LPM (5 gpm)
Material:	Aluminum with stainless steel fittings
Corrosion Resistance	Black anodization and Magnesium anodes
Control:	Rate or Spatially Correspondent (master/slave)

International Submarine Engineering Ltd.

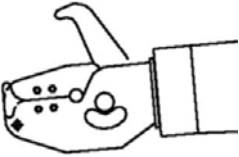
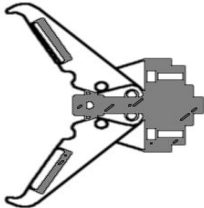
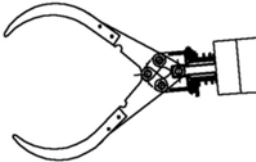
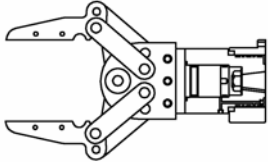
1734 Broadway Street, Port Coquitlam, BC V3C 2M8 Canada
Tel: 604.942.5223 Fax: 604.942.7577
manips@ise.bc.ca www.ise.bc.ca

Magnum-5 STD

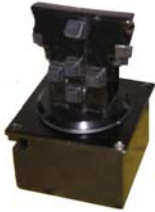

Operating Envelope



Gripper Options

Single Sided	Scissor	Claw	Parallel
			

Controller Options

Rate	Master Slave
	

International Submarine Engineering Ltd.

1734 Broadway Street, Port Coquitlam, BC V3C 2M8 Canada

Tel: 604.942.5223 Fax: 604.942.7577

manips@ise.bc.ca www.ise.bc.ca